

The Barnstormers Theatre 2023



Our 93rd Season

WORLD



FAMOUS

TAMWORTH DISTILLING

JUST ACROSS
THE STREET
FROM THE
BARNSTORMERS!



SHOW YOUR TICKET
AND RECEIVE A **FREE** TASTING FLIGHT*

***RESTRICTIONS APPLY**

Redeem at Tamworth Distilling

THE BARNSTORMERS

2023 Our 93rd Season

From the Artistic Director	3
Box Office Information	5
Show Summaries	6
History	8
Who's Who on the Stage	17
Who's Who Behind the Scenes	28
Board of Directors	35
Our Contributors	38
Advertiser Index	44



Artistic Director	Sarah Rozene
Production Manager	Dori Robinson
Technical Director	Joseph Paris
Scenic Charge	Karissa Roberts
Props Manager	Lily Bitner
Master Carpenter	Josh Heath
Master Electrician	Ryan Randazzo
Sound and Lighting Technician	Jack Wyrsh
Costume Shop Manager	Chelsie Cartledge-Rose
Wardrobe Supervisor	Natalie Gray
Stitcher	Edy McAndrews
Carpentry Apprentice	Maddie Cortese
General Technician Apprentice	Gwyneth Hibbert
Properties/Paints Apprentice	Sarah Lloyd
Sound Apprentice	Zoey Gromadzyn
Marketing Director	Evelyn Lamprey
Development Director	Natalia Egan
Administrative Coordinator	Ana Prillaman
Box Office Manager	Rebekah Pugh
House Manager	Heather Booska
Box Office Staff	Linsey Coles
Facilities Manager	Nick Longley

Dear Friends,

Welcome back home! Here at The Barnstormers Theatre we feel so fortunate to bring joy into your lives through the beauty of live theater. Whether this is your first show with us, or your 100th, being able to tell stories to you is what we are here for, and what we love to do. I would like to think that you, our audience, can feel the love for what we bring to you at every performance.

I often tell people that The Barnstormers Theatre is a unique place to call home. Not because we are one of a handful of theaters that still produces productions solely in the warmer months of year, or because we are a group of people who can be as quirky in life as the characters you see on this stage, but because the actors, technicians, artists, and staff are some of the kindest, most genuine, and talented people I have ever had the pleasure to work with. This was true when I started working at The Barnstormers Theatre in 2010, and it continues to be true today. I imagine when we celebrate our 200th season, this will still be true.

Theatre has long been a form of escapism to many, and these days, it seems like we could all use a place to sit back, enjoy, and lose ourselves in a story on stage. So, whether it's a group of nuns putting on a show, the Brewster family's antics, a chilling Agatha Christie tale, one man playing 40 characters, or solving a mystery in the English moors with Sherlock and Watson, we are thrilled to bring you a couple of hours to forget about the world outside and immerse yourself in another summer at The Barnstormers Theatre.

With kindness,
Sarah Rozene
Artistic Director



From the Artistic Director

For Your Information

Please...no photography or recording during the performance. Please make sure that all cell phones are turned off.

Assisted Listening Devices are available. Please ask when reserving your tickets. The Barnstormers is wheelchair accessible. Wheelchair seating must be reserved through the Box Office at 603-323-8500.

Emergency Exits, Orchestra:

Rows A–G, seats 1, 3, 5, 7, 105, 106, 107, exit front, left of stage.

Rows A–G, seats 2, 4, 6, 8, 101, 103, 104, exit front, right side of stage.

Rows H–O, all seats, exit through lobby and front three doors.

Emergency Exits, Balcony:

Rows A–C, seats 1, 3, 5, 7, 105, 106, 107, 108, exit down left stairs, and exit right, out side door.

Rows A–C, seats 2, 4, 6, 8, 101, 102, 103, 104, exit down right stairs, and exit right, out side door.

Row D, seats 1, 3, 5, 7, 103, 104, 105, 106, 107, 108 exit down left stairs and exit left, out side door.

Row E, seats 1, 3, 5, 7, 102, 103, 104, 105, 106, 107, 108 exit down left stairs and exit left, out side door.

Our Mailing List : Please add your name and address to the booklet in the lobby or scan this QR Code with your phone. You will receive our email newsletter, advance play and ticket information, and other Barnstormers communications.



ABOUT THE ASSISTED HEARING SYSTEM



The Barnstormers Theatre has a state of the art assisted listening system. If your hearing aid has a telecoil (the setting used to amplify your telephone), you can use that setting to hear the show directly through your hearing aid. If you do not use a hearing aid, you may request a receiver and headset from the Box Office. Unfortunately, this system does not work in the first three rows of the orchestra. And while the system does work in the balcony, reception is better in the orchestra.

The Box Office

Box Office Hours

Monday through Saturday, 10 am - 5 pm, Show Nights until 9 pm

Evening

Orchestra \$39.50

Balcony \$34.50

Matinee

Orchestra \$27.50

Balcony \$22.50

Package Price per Ticket

WEBPP5 Eve.Orchestra \$36.50

WEBPP5 Eve.Balcony \$31.50

Please Note: An additional \$2 technology fee is added to the price of each ticket.

Family Package

The Barnstormers wants to encourage family groups and young people to experience the excitement and pleasure of live theatre. We now offer steeply discounted ticket packages to family groups (including at least one person 18 or under). *Please note: an additional \$2 technology fee per ticket will be added to the total. Availability may be limited, so first come, first served.*

Locals Discount

Carroll County residents with proof of residency (NH driver's license) can now buy discounted same-day tickets for any show. Contact the Box Office at 603-323-8500 or stop by to purchase tickets.

The Barnstormers accepts Visa, Mastercard, Discover & Amex. Order tickets online at **barnstormerstheatre.org** or call us to order tickets at **603-323-8500**.

You can order tickets online, by mail or by phone. Please note: an additional \$2 technology fee per ticket will be added to the total. Fee is included in Package Prices. All discounted tickets must be purchased directly through the Box Office.

Mail your payment to: PO Box 434, Tamworth, NH 03886

Our 93rd Season!



• THE BARNSTORMERS •

SUMMER 2023

Sponsored by The Haynes Family Foundation

Book, Music and Lyrics by Dan Goggin

June 29 – July 8

Nunsense

The Little Sisters of Hoboken discover that their cook, Sister Julia, Child of God, has accidentally poisoned 52 of the sisters, and they are in dire need of funds for the burials. The sisters decide that the best way to raise the money is to put on a variety show, so they are here to take over The Barnstormers Theatre, on the set of some of our most beloved shows!

Here we meet Reverend Mother Regina, a former circus performer; Sister Mary Hubert, the Mistress of Novices; a streetwise nun from Brooklyn named Sister Robert Anne; Sister Mary Leo, a novice who is a wannabe ballerina; and the delightfully wacky Sister Mary Amnesia, the nun who lost her memory when a crucifix fell on her head. Featuring star turns, tap and ballet dancing, an audience quiz, and comic surprises.

Sponsored by Bank of New Hampshire

Joseph Kesselring

July 13 to 22

Arsenic and Old Lace

Mortimer Brewster is living a happy life: he has a steady job at a prominent New York newspaper, he's just become engaged, and he gets to visit his sweet spinster aunts (Vivette Cotter and Jean Mar Brown) to announce the engagement. Mortimer always knew that his family had a bit of a mad gene – one brother believes himself to be Teddy Roosevelt and the other strangely now resembles Boris Karloff – but his world is turned upside down when he realizes that his dear aunts have been poisoning lonely old men for years! When Mortimer's maniacal brother, Jonathan returns on the night that the aunts were planning to bury the newest victim, Mortimer must rally to help his aunts and protect his fiancé – all while trying to keep his own sanity, as well.

Sponsored by Grappone Automotive Group

Agatha Christie

July 27 to August 5

The Stranger

An Agatha Christie play that's never been done before at The Barnstormers Theatre!

Enid Bradshaw has led a staid and proper existence. Unexcited about the prospect of marriage to her long-time fiance Dick Lane, Enid rejects him for newcomer Gerald Strange, who sweeps her off her feet. She abandons her job, friends, and family to move to a remote and secluded country cottage with him – where a dark and terrible climax takes place. This chilling and intricate psychological thriller was based on Christie's 1924 short story *Philomel Cottage*. Sure to send a chill up your spine, this Agatha Christie is not to be missed!

Sponsored by The Woodshed

Becky Mode

August 10 to 19

Fully Committed

This devastatingly funny play follows a day in the life of Sam Peliczowski, an out-of-work actor who mans the red-hot reservation line at Manhattan's number-one restaurant. Coercion, threats, bribes, histrionics—a cast of desperate callers will stop at nothing in their zeal to land a prime reservation, or the right table. Amid the barrage, Sam's got his own needs to contend with—his recently widowed dad wants him home for Christmas, and he's up for a choice part at Lincoln Center. While juggling scheming socialites, name-dropping wannabes, fickle celebrities and egomaniacal bosses, can he manage to look out for himself? *Fully Committed* has forty wildly diverse characters designed to be played by Barnstormers favorite Doug Shapiro.

Ken Ludwig

August 24 to September 3

Baskerville: A Sherlock Holmes Mystery

Get your deerstalker cap on – the play's afoot! Comedic genius Ken Ludwig (*Lend Me a Tenor*, *Moon Over Buffalo*) transforms Arthur Conan Doyle's classic *The Hound of the Baskervilles* into a murderously funny adventure. Sherlock Holmes is on the case. The male heirs of the Baskerville line are being dispatched one by one. To find their ingenious killer, Holmes and Watson must brave the desolate moors before a family curse dooms its newest heir. Watch as our intrepid investigators try to escape a dizzying web of clues, silly accents, disguises, and deceit as five actors deftly portray more than forty characters. Does a wild hellhound prowl the moors of Devonshire? Can our heroes discover the truth in time? Join the fun and see how far from elementary the truth can be.



A SHORT HISTORY OF THE BARNSTORMERS THEATRE

In 1931, Francis Cleveland, the youngest child of President Grover Cleveland, was pursuing a career on Broadway. That summer, with his wife Alice and friend Ed Goodnow, The Barnstormers made its debut in the Cleveland family's summer hometown of Tamworth.

The original troupe comprised mostly young actors—recent graduates from colleges including Harvard, Wellesley, Radcliffe and Amherst. The first director was Goodnow, a graduate of Harvard and George Pierce Baker's "47 Workshop" which later became the Yale School of Drama.

The name "The Barnstormers" was a natural choice as it described exactly what the theatre troupe did—opening on Monday in Tamworth, then barnstorming through towns in Maine and New Hampshire during the week, and returning for a final Saturday evening performance in Tamworth at the Tamworth Gardens—a former boxing venue where the audience was often greeted by former First Lady Frances Cleveland in formal attire. It was an ambitious project as the locations included Sugar Hill, Wolfeboro, Conway, Holderness, and Harrison and Poland Spring, Maine—long hauls even today.

After four years of touring, The Barnstormers bought the old Kimball's Store and converted it into today's theatre. While World War II brought an abrupt end to barnstorming, the theatre did its part to keep the home fires burning by showing movies. After the war, the building became the troupe's permanent home.

Many of you remember pre-air-conditioning days when our program books doubled as fans to keep the audience cool during hot summer nights. And few folks miss the old wooden seats. What still remains, however, is the promise of wonderful summer theatre in this little New Hampshire hamlet. You are the reason we're still here. Thank you, and please keep coming back!



VISIT OUR OSSISPEE TAP ROOM

**FRESH BEER • FOOD TRUCKS
LIVE MUSIC • YARD GAMES
FARMERS MARKET FRIDAYS**

HOBBS BREWING COMPANY
765 RT -16, OSSISPEE, NH 03864

hobbsbeer.com • @hobbsbrewingcompany

**54
SHOWS
ONE
PROGRAM BOOK
THOUSANDS OF PATRONS
CALL 323-8661 TO GET IN
NEXT YEAR'S BOOK**

thrivent®

Proud supporters of
The Barnstormers
Theatre



The brightest futures are built together. We succeed when our clients and communities thrive.

Let's connect.

The Groleau Financial Group

1230 Rt 16, Suite 3
Ossipee, NH 03864
603-301-1023



Advice | Investments | Insurance | Banking | Generosity

25635SP R8-22

Visit One Address for Your New Address!



www.EXITRealtyLeadersNH.com

603-539-9595

Love The Area? Call EXIT Realty Leaders to Find Your New Home!

810 Route 16 Ossipee, NH

Enjoy the 2023 Barnstormers Season!

THE
**FRANNY O
 SHOW**

★ ★ ★ ★ ★
 AT THE BARNSTORMERS THEATRE



SPECIAL GUEST NOELLE BEAUDIN
SEPTEMBER 9 — 7:30 PM

ORIGINAL MUSIC • AMERICANA & FOLK
 FARM & STUDIO IN SANDWICH, NH
 FRANNYO.COM

★ ★



*An afternoon not to be missed, of
 Barnstormer stories and songs*

**Join us for a Reading
 on Sunday, July 16th
 at 1:00 pm.**

**Featuring Penny Purcell and
 Bob Bates, and our resident
 company members,
 Darien Crago, Aimee Doherty,
 and Cheryl Mullings.**

Suggested Donation \$10

The FrannyO Show September 9

With a sound inspired by a melting pot of Americana, country, blues, and rock, Fran O'Connell discovered a love for music later than most. A graduate from Columbia University, a Veteran, and a seasoned entrepreneur, O'Connell is no stranger to heartache, hard work, and the pursuit of the American Dream. All of it inspired the inception of The FrannyO Show, the musical moniker of O'Connell.

The FrannyO Show has recorded two albums in Nashville with Rolling Stone acclaimed producer Jamie Kent. O'Connell frequently tours with his dynamic band throughout the Northeast.

Fran now lives and works at his farm Sandwich, New Hampshire and has played at the Bombyx Theatre in Northampton, the Cold River Radio Show, and The Barnstormers Theatre.

**The FrannyO Show wishes
 The Barnstormers Theatre
 a successful 2023 season.**



"PRESERVE YOUR MEMORIES"

weddings | events | retreats

reservethepreserve.com

88 Philbrick Neighborhood Road

Tamworth, New Hampshire

603.323.8333

The Cold River Radio Show Comes to Barnstormers Theatre - September 10

Awarded "Best YouTube Radio 2023" By NH Magazine.
Celebrating the Arts and Culture of New England since 2012.
Hosted by Jonathan Sarty and his fabulous Cold River Radio Band.

This show welcomes:

- Cassandre McKinley "Boston's Queen of Soul Jazz"-Boston Globe
- "Master Artist" Jordan Tirrell-Wysocki with his Award-Winning Jordan Tirrell-Wysocki Trio. "One of NH's most popular and most appreciated Celtic Bands"
- Kate McNally
- Author Ken Sheldon discusses his true-crime novel "Deep Water"
- Dr. Peter Crane with the *Mount Washington Moment*, and other special guests

For online tickets and show information visit Coldriverradio.com

Aspect Productions New England Presents

COLD RIVER RADIO SHOW

Celebrating The Arts & Culture of New England.™

**Coming to The Barnstormers Theatre
September 10th, 2023!**

2017 New Hampshire Magazine **BEST OF NH**
Cold River Radio Editor's Pick

New Hampshire Magazine **BEST OF NH** 2023
EDITOR'S PICK
BEST YouTube RADIO

2019 New Hampshire Magazine **BEST OF NH**
Best Band Leader Editor's Pick

SUBSCRIBE TO OUR WEEKLY VIDEOS!

For Full Season's Schedule:
www.coldriverradio.com

YouTube
[@coldriverradioshow](https://www.youtube.com/@coldriverradioshow)

YANKEE SMOKEHOUSE and WILD HOG PIZZERIA



NOT JUST GREAT BBQ. SO MUCH MORE!

Rt. 16 & 25w • West Ossipee, NH

603-539-7427 • www.yankeesmokehouse.com



Specializing in Products from Local Farms!

Meats | Dairy | Produce

Soups | Sandwiches | Dinners to Go

Baked Goods | Catering

Open
7 Days-A-Week
10am - 7pm

2370 Route 16 | West Ossipee, NH | 539-2266 | farmtotablemarketnh.com

CORMACK

CONSTRUCTION MANAGEMENT, INC.

Custom Homes
Energy Efficient Remodeling
Award-winning Design Team
Quality Craftsmanship
Cabinetry & Built-ins

Contact us today!
(603) 367-8272
Info@CormackConstruction.com

ONE-OF-A-KIND MARQUEE POSTERS



Amanda Huxtable & Doug Shapiro in *Popcorn Falls*, 2021

As you look around the theatre, you'll see our tradition of hand-painted marquee posters. In the early years, the set painters created the posters, using the same two canvases over and over, saving none of the images. Starting in the 1980s, talented local artists were enlisted to create these collectible posters which are sold at the end of each summer. YOU can bid now – check in with the Box Office. Many thanks to our 2023 artists and to Kate Thompson for coordinating.

Nonsense: Kate Gartrell

Arsenic and Old Lace: Jesse Beecher

The Stranger: Karissa Roberts

Fully Committed: Alison Pugh

Baskerville: Kate Thompson

Looking for a bank that
loves your community
just as much as you do?

You've got people!

BNH
Bank of New Hampshire

Proud Supporter of the
*Barnstormers
Theatre*

BNH.Bank 1.800.832.0912 Member FDIC

SPONSOR, NUNSENSE

Many Thanks to
Lutheran Church
of the Nativity
in North Conway,
Groleau Financial Group
at Thrivent, and
White Mountains Pride
for sponsoring and
supporting the
performance of the
New Hampshire
Gay Men's Chorus
on June 10.

CONWAY SCENIC RAILROAD

Choose from our
scenic Mountaineer,
or classic train rides
to Conway
or Sawyer River.



All Aboard!



Take our Valley train to experience a classic railroad journey

A Choice of Class and Scenic Train Rides!

- Take a step back in time and enjoy a classic train ride to Conway or Sawyers River or take a scenic journey over Crawford Notch aboard the *Mountaineer*.
- Seasonal excursions begin in April and run through November.

— *Call for boarding times* —

Call or Book online
ConwayScenic.com • (603) 356-5251

38 Norcross Circle | North Conway, NH



Committed to a green energy future
through energy conservation and sustainable design



1 Mt. Washington Auto Road, Gorham, New Hampshire 03581
 mt-washington.com | (603) 466-3988



THE MAJESTIC THEATRE
at Mountain Top Music Center



SCAN ME

*year-round concert series featuring artists
 of all genres from near and far
 plus music education for all*

MOUNTAIN TOP
 music center

34 Main Street, Conway, NH 03818
 conwaymajestic.com • mountaintopmusic.org

The



WOODSHED

Restaurant & Pub

**Come and enjoy
an upscale American cuisine
with exceptional service inside
a beautifully reconstructed
200 year old barn.**

Or

**Enjoy a casual fire-side dinner
in our Pub; "The Shed".**

603-476-2700

128 Lee Rd

Moultonborough, NH 03254

WHO'S WHO IN THE COMPANY • ON THE STAGE

JORDAN AHNQUIST (*Arsenic and Old Lace*) is thrilled to be back with The Barnstormers where last season he appeared in *The Legend of Georgia McBride*, *Silent Sky*, and *Lucky Stiff*. A few other Barnstormers credits include, *The Producers*, *Urinetown*, *Little Shop of Horrors*, *Big River*, and *Leading Ladies*, among others. New York Off Broadway credits include *Shear Madness*, *The Battles of Richmond Hill*, *When Pigs Fly*. Regionally Jordan has worked with Alabama Shakespeare Festival, Milwaukee Rep, Utah Shakespeare Festival, Florida Studio Theatre, Lyric Stage, Speakeasy Stage, Central Square Theatre and The Gamm among others. Jordan holds a BA in theatre from Muhlenberg College. jordanahnquist.com

ROBERT BATES (*Arsenic and Old Lace*) is thrilled and grateful to be returning to The Barnstormers stage for another summer. Some of his favorite roles have included Grandpa in *You Can't Take it With You*, Robert in *Proof*, Dr. Chumley in *Harvey*, Harpagon in *The Miser* and Saunders in *Lend Me a Tenor*. Bob has an M.F.A. in acting from Stanford University and is a resident of Sandwich.

GIL BRADY (*Baskerville*): Barnstormers debut! Off-Broadway: Jack in *Sideways* (Theatre at St. Clements), Eddie in *Shear Madness* (Davenport Theatre), *National Pastime* (Playwrights Horizons). Selected Regional: Man #2 in *Baskerville* (Syracuse Stage); Sam in

Mamma Mia (Capital Rep -Berkshire Theatre Award Nomination); Captain Von Trapp in *The Sound of Music* (Alabama Shakespeare); and recently playing Chris in *The Play That Goes Wrong* (Florida Studio Theatre). National Tours: *White Christmas*, *Annie*. TV: *My Sordid Affair...* (Lifetime Movie Network), *Law and Order: SVU*, *All My Children*.

JEAN MAR BROWN (*Arsenic and Old Lace*) is delighted to be back for her 44th year at The Barnstormers. Last summer, she felt honored to participate in three readings of scenes from plays performed over the history of The Barnstormers. In past summers she has played characters such as Harriet Stanley in *The Man Who Came To Dinner*, Miss Emily Brent in *And Then There Were None*; Penny Sycamore in *You Can't Take it With You*, Jean in *Good People*; and Fonsia Dorsey in *The Gin Game*, among others. Other credits include: films for PBS, the feature film *Something Sweet*, regional theatres such as The Ensemble Studio Theatre and The Boston Rep, and narration and character voices for NPR.

CRAIG CAPONE (*Arsenic and Old Lace*) is delighted to be returning to The Barnstormers! He was previously seen as Cinderella's Father in last year's *Into the Woods*. Favorite roles include Doc in *West Side Story* at Seacoast Repertory Theater, Mr. Brownlow in *Oliver* at the Palace Theatre, and Luigi Gaudi in *Lucky*

Ghocorua Camping Village

KOA & Wabanaki Lodges, Tipis & Cottages
Lodging & Camping for over 50 years!



Proudly supports The Barnstormers for
enriching the lives of residents and visitors!



ghocorua camping.com

603-323-8536

WHO'S WHO IN THE COMPANY • ON THE STAGE

Stiff at the Good Theater. He was nominated for Best Actor in *The Priest* at the Sanford International Film Festival, and for Best Supporting Actor in *The Deja Vuers* at the Iconic Film Festival. craigcapone.com.

SARAH COREY (*Nunsense*) is making her Barnstormers debut!! A Boston native, she often spent her summers as a child hiking in the White Mountains with her two siblings, her parents, and the family dog. She's delighted to revisit Sister Amnesia, whom she played years ago in *Meshuggah-Nuns!* at the Lyric Stage. In the past year she has gotten to explore Borachio in the Elliot Norton nominated *Much Ado About Nothing* (Commonwealth Shakespeare Company), Ursula in the Helen Hayes nominated *Much Ado About Nothing* (Shakespeare Theatre Company), Daphna in *Bad Jews* (Gamm Theatre), and Trina in *Falsettos* (Rep Stage). She is a graduate of Princeton University and the Shakespeare & Company Conservatory of Classical Acting, she calls Washington, DC her home, and she dedicates this performance to the memory of the wonderful Carolyn Droskoski, who gave her her first crack at Sister Amnesia. She is also, like most of us, a passionate member of the Doug Shapiro Fan Club.

VINETTE COTTER (*Arsenic and Old Lace*) is so excited to be doing this play. Another one she's always wanted to do and again The Barnstorm-

ers is bringing that dream to reality. And even better doing it with close friend and fellow actor Jean Mar Brown. Some of her favorite productions at The Barnstormers include *On Golden Pond* always with husband Frank T. Wells, *Letice and Lovage*, *Driving Miss Daisy*, and *A Little Night Music*

DARIEN CRAGO (*Nunsense*, *The Stranger*) is so happy to be back in wonderful Tamworth! Last summer, she toured New Hampshire with The Barnstormers' tap-dancing cabaret *Manhattan Shuffle*. Some favorite NYC credits include *Holiday Inn* on Broadway, *Lady, Be Good* (starring Tommy Tune) and *Paint Your Wagon* at Encores!, and most recently *Cheek to Cheek* at The York Theatre. Darien has traveled all over the country (only two states left!) performing at many regional theaters and touring with *Irving Berlin's White Christmas* during the holidays. TV credits: *The Marvelous Mrs. Maisel* and *Fosse/Verdon*. Many thanks to Sarah for having me back and to the concession cookie bakers for making my favorite intermission snack!!

ALEXANDRA de SUZE (*Nunsense*) is thrilled to be making her Barnstormers debut! Hot off her solo cabaret debut *Late Bloomer*, she was recently part of the Rigano Songbook's IXth Annual *Ides of March Extravaganza* at Don't Tell Mama in NYC. She is a singer, actor, and writer who has hosted and performed cabaret, direct-

Tax & Accounting Services Since 1973
Tax Planning & Preparation | Accounting, Audit & Financial Reporting | Business Consulting | Financial Planning | Elder Care Services | Client Accounting Services

lmrpa.com

50
ANNIVERSARY
Celebrating Excellence Since 1973

**Leone,
McDonnell
& Roberts**
PROFESSIONAL ASSOCIATION
CERTIFIED PUBLIC ACCOUNTANTS

WHO'S WHO IN THE COMPANY • ON THE STAGE

ed for festivals, written for storytelling events, can be seen in the short films, *What Do I Owe You?* and *Blindsight*, heard in the podcast series *Expired*, and has a satire series *Reince Preibus Tried...And other tales from the White House* on Facebook. In the meantime, she is a regular actor with The Playground Experiment, the alto at Madison Avenue Baptist Church, and was recently back behind the kit as part of No Name variety show house band The Summer Replacements. Lastly, don't forget to find her on YouTube with mashup collaborator Richard Binder as #BinderSuze. alexandradesuze.com

AIMEE DOHERTY (*Nunsense, The Stranger*) Is excited to return to The Barnstormers after appearing in *A Little Night Music* and *Dancing at Lughnasa*. Other regional credits include: *As You Like It* (Rosalind) - Shakespeare & Company and the Maria Friedman directed production of *Merrily We Roll Along* (Gussie) - Huntington Theatre. Aimee soloed with the Boston Pops under the baton of Keith Lockhart and appeared in the film *Don't Look Up*. She is a two-time recipient of the Elliot Norton Award and a three-time recipient of the IRNE Award for Outstanding Actress in a Musical. aimeedoherty.net

AMAHRI EDWARDS-JONES (*Arsenic and Old Lace*) is ecstatic to be making her Barnstormers debut! She was most recently seen in *Gypsy* at Goodspeed Opera House, the Australian Tour of *Hairspray*, and as Duckling Donna in

the U.S. National tour of *Summer: The Donna Summer Musical*. All thanks to God, her lovely parents, Bloc, family and friends for their unconditional support! @amahri_e_j

BUDDY HAARDT (*Baskerville*) is thrilled to be returning for his 11th season and 24th production at The Barnstormers! Some of his favorite Barnstormer memories are playing Dracula in *Laughing Stock*, Tom in *The Glass Menagerie*, George in *Our Town*, and directing *Things My Mother Taught Me* in the 2019 Barnstormers' season. He's acted in productions at Lincoln Center, The Guthrie Theatre, Alley Theatre and Baltimore CenterStage, among others, but he always feels at home on The Barnstormers' stage. Buddy just directed a production of Shakespeare's *Twelfth Night* in Minneapolis, for Gray Mallard Theatre Co. and his TV work includes *Law and Order: SVU*, *The Food that Built America*, *Homicide City*, etc. Check out his TV and stage career at BuddyHaardt.com. Buddy comes from Richmond, TX.

RYAN HALSAVER (*Baskerville*) is thrilled to make his Barnstormers debut! Ryan was last seen performing in *Kinky Boots* both Off-Broadway at Stage 42 (Mr. Price) and at the Saugatuck Center for The Arts (Harry). Favorite theatre credits include: Robin/Lady Capulet in *Shakespeare in Love*, John Calhoun in *Bloody Bloody Andrew Jackson*, Hortensio in *The Taming of the Shrew*, and Captain Hook/Mr. Darling in the *Peter Pan*

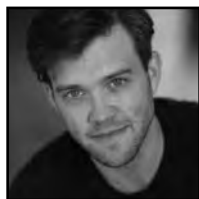


**Farm to Table Dinner Tours • Sunset Pizza Nights
Guest Cottages • Weddings on the Farm**

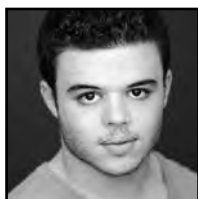
**Our Own Grass-Fed Beef • Pastured Pork & Chickens
Sustainably Grown Vegetables**

www.whitegates-farm.com • 603-662-7556 • 603-662-7538

THE BARNSTORMERS 2023 ACTING COMPANY



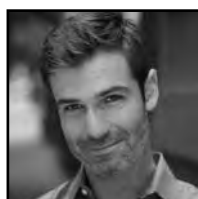
Jordan Ahnquist*



Jorge Barranco*



Robert Bates*



Gil Brady*



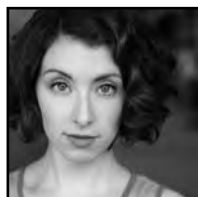
Jean Mar Brown*



Craig Capone



Sarah Corey*



Darien Crago*



Vinette Cotter*



Amahri Edwards-Jones



Alexandra de Suze*



Aimee Doherty*



Buddy Haardt*



Kevin Herrera



Ryan Halsaver*



C. Mingo Long*



John Long*



Bill Mootos*



Cheryl Mullings*



Rachel Alexa Norman*

THE BARNSTORMERS 2023 ACTING COMPANY



Dale Place*



Andrew Sellon*



Doug Shapiro*



David Sittler*



Robert St. Laurence*



Justin Teuber



Jennifer Dorr White*

*Member of Actors' Equity Association

A Word to the Players:

Congratulations!

*Since you're in a cast, you've
already broken a leg.*

With Special Shout Out To
Vinette and Cheryl

In Memory of
Dorothy Marie Lindblade
(1942-2022)



COURTESY
THE CARL E. AND DOROTHY M. LINDBLADE FAMILY FUND

WHO'S WHO IN THE COMPANY • ON THE STAGE

360 national tour. For more information, please visit ryanhalsaver.com

KEVIN HERRERA (*Arsenic and Old Lace*) is ecstatic to be making his Barnstormers debut. He is a Colombian-American actor based in NYC. He earned his bachelor's from Hamilton College, and his MFA from Brooklyn College. In New York, he works as an audition monitor for Actor's Equity. He was most recently seen as Cornwall in *King Lear*.

BLAIR HUNDERTMARK (Director, *Baskerville*) is thrilled to be back for his 18th season. He's a company member at NH Theatre Project (NHTP) in Portsmouth, a NH Arts Council Teaching Artist, an adjudicator for the NEA, and a globe-trotting MC for the *FIRST* Robotics Competition with credits from Seattle to Sydney. BST directing credits include: *Ghost Train*, *Driving Miss Daisy*, *You Can't Take It With You*, *One Man Two Guvvners*, *Bus Stop*, *Moon Over Buffalo*, and *On Golden Pond* among many others. Favorite BST roles include Gordon in *Laughing Stock*, Greg in *Sylvia*, the Stage Manager in *Our Town*, Mike in *Good People*, Richard Hannay in *The Thirty Nine Steps*, and Reed in *The Complete World of Sports* (abridged).

JOHN LONG (*The Stranger*) is grateful to be back in Tamworth for his 7th season. Some of his favorite Barnstormer credits include Francis in *One Man, Two Guvvners*, Brian in *Laughter*

on the 23rd Floor, and Oliver in *Spider's Web*. Other regional theatre credits include Florida Studio Theatre, The Asolo Theatre, The Shakespeare Theatre, W.H.A.T, The Provincetown Theatre, Syracuse Stage, and The Gateway Playhouse. TV: *FBI: Most Wanted*, *The Blacklist*. Thanks to his family and Murray for their continued support. Johnlong.nyc

BILL MOOTOS (*Baskerville*) delighted to return to The Barnstormers, where he has appeared in a number of shows, including *Dancing at Lughnasa*, *The Weir*, *Dinner With Friends*, *On Golden Pond*, *Be My Baby*, and many others. He has worked in many theaters in the New England Area, which include Greater Boston Stage Company, Huntington Theatre Company, Moonbox Productions, Wellfleet Harbor Actors Theatre, and countless others. Film work includes *Boston Strangler*, *Don't Look Up*, *Little Women*, *Daddy's Home 2*, and the soon to be released *The Holdovers* and *The Collaboration*. Proud AEA and SAG-AFTRA National Board member.

CHERYL MULLINGS (*Nonsense*, *The Stranger*) Cheryl is very thankful and humbled to return for her 10th season at The Barnstormers! WOW! You may not recognize Cheryl under that nun's habit, but hopefully you remember her from some of her appearances over the last 10 years: *Lucky Stiff*, *Silent Sky*, *Into the Woods*, *Our Town*, *Damn Yankees*, *Laughter on the 23rd Floor*, *Spamalot*, *A Little Night Music*, *A Murder is Announced*, *Vanya & So-*



COOPER
CARGILL
CHANT
ATTORNEYS AT LAW

PROUDLY SUPPORTING
THE BARNSTORMERS THEATRE

GOOD PEOPLE. GREAT LAWYERS.

Offices in North Conway and Berlin
coopercargillchant.com

WHO'S WHO IN THE COMPANY • ON THE STAGE

nia & Masha & Spike, Urinetown, One Man, Two Guvnors, The Full Monty... just to name a few! Originally from Canada, Cheryl lives in NYC now, and loves spending summers in Tamworth, NH. Special thanks to the late Pat Dawson, to Caroline Smith, and to the late Di Nyland Proctor who all cast me in my first productions of *Nunsense*, many moons ago! Thanks to Sarah Rozene for getting me back in the habit! A big thanks to my family & friends, and the entire Barnstormers family for their continued love & support. Xo

RACHEL ALEXA NORMAN (*Baskerville*) is excited to be back at The Barnstormers for her tenth season in Tamworth ! Favorite Barnstormer roles include Audrey in *Little Shop of Horrors*, Maggie in *Lend Me a Tenor*, and Sally in *You're a Good Man, Charlie Brown*. Other credits include *110 in the Shade* at Lincoln Center (Scott Ellis, Director; Susan Stroman, Choreographer), *Camelot* at The Goodspeed (Rob Ruggiero, Director), and originating the role of Frances Rushmore in *Mr. Confidential* at The NY Musical Theatre Festival and The York Theatre. Training: NYU, LAMDA. Much love to Miles, Leo, and my parents.

DALE PLACE (*Arsenic and Old Lace*) Dale has been coming to The Barnstormers since 1981!!! Broadway: *Heisenberg*, National Tour: *The Humans*. Off-Broadway: The Public Theatre-Delacorte, Manhattan Theatre. Club, Lincoln Center Theater. Regional: Hunting-

ton Theatre, Hanover Theatre, Northern Stage, New Repertory Theatre, Lyric Stage Co., Cleveland Play House, Boston Playwrights Theatre. Film: *The Fighter, The Proposal, Joy, Gone Baby Gone, What's Your Number?* Television: *Law & Order-Organized Crime, Crashed, Julia.*

CLAYTON PHILLIPS (Director, *Arsenic and Old Lace*) served as the Producing Artistic Director of The Barnstormers for 4 years and has directed 16 shows here and is thrilled to be back doing *Arsenic And Old Lace*. Clayton has worked as a Production Supervisor for 5 Broadway Shows, 4 National Tours and 2 Off-Broadway Productions. He served as Harold Prince's Assistant for 5 years and worked on *Kiss Of The Spider Woman, Candide* and *Parade*. He is the recipient of 5 New Hampshire Theatre Awards and has directed over 250 plays and musicals both regionally and internationally. Most recently he directed productions of *Private Lives* and *Murder For Two* (Winnepesaukee Playhouse), *A Christmas Carol* (National Tour), *Our Town* and *Into The Woods* (The Barnstormers), *Chicago* (Winner of NH Theatre Award (Winnepesaukee Playhouse), and *Dirty Rotten Scoundrels* (Arizona Broadway Theatre). Thank you Sarah for this opportunity and your continued support. claytonphillips.com

DORI ROBINSON (Director, *Fully Committed*) is thrilled to return to The Barnstormers after directing *Silent Sky* last year. She is an award-winning director, playwright, drama-



Big City Deal, Small Town Feel

PROFILE
SUBARU
CONWAY, NH

603-447-3845

Route 16 in Conway NH
www.profilesubaru.com

WHO'S WHO IN THE COMPANY • ON THE STAGE

turg, and educator who develops projects exploring social consciousness, personal heritage, and identity. An avid teaching artist, she shares her love of Shakespeare, new play development, political theatre, and gender in performance. Directing credits include: *Silent Sky* (Barnstormers, 2022), *Silent Sky* (Elliot Norton Winner for Best Production – Flat Earth Theatre), *A Bright Room Called Day*, *Julius Caesar*, *The Merchant of Venice*, *The Lion in Winter*, *Extremities*, *The Pajama Game*, *Into the Woods*, and *Peter and the Starcatcher*. Dori's original plays have been produced in New York, Chicago, and Boston, most recently *The Elm Tree* with her company, Alight Theater Guild. She is the host of the Tree Speech podcast. www.dorirobinson.com

SARAH ROZENE (Artistic Director, Director *Nonsense*) is thrilled to be back for her thirteenth season with The Barnstormers. In the off season, Sarah works as a designer, director and teaching artist based in the Boston area. Favorite credits at The Barnstormers include: *Lucky Stiff*, *Popcorn Falls*; *Vanya, Sonya, Masha & Spike*; *Laughing Stock*; and *The Glass Menagerie*. Sarah has worked, directed, and designed for organizations including Alight Theater Guild, Greater Boston Stage Company, The OnStagers Dramatic Society, The Longwood Players, TEST at Babson College, Beatrice Herford's Vokes Theater, Apollinaire, Quill Entertainment, The Williamstown Theatre Festival, Brandeis Theater Company,

and Curry College. Sarah received her MFA in Theatre Design from Brandeis University, is a graduate of Gettysburg College where she studied Theatre Arts and Marine Science, and spent six months in Florence, Italy studying Italian Theatre and Renaissance Art History. She was Theatre Faculty within the Communication Department at Curry College for ten years where she strove to empower her students to tell stories through the medium of theatre. In 2016, Sarah and her cast of *The Laramie Project* were awarded The Human Rights Award by Curry College. In addition to her work at Curry, Sarah has worked with students at multiple Boston area colleges including Merrimack College, Brandeis University, Babson College, and Regis College.

ROBERT ST. LAURENCE (*The Stranger*) is happy to return to The Barnstormers, where he has appeared in *Lucky Stiff*, *Black Coffee*, *Into the Woods*, *Spider's Web*, *And Then There Were None*, *Towards Zero*, *My Three Angels*, and *Spamalot*. Robert is a Boston-based actor who has performed with Huntington Theatre, American Repertory Theater, Hanover Theatre Repertory, Lyric Stage, New Repertory Theatre, Greater Boston Stage, Wellfleet Harbor Actors Theater, and Company One. Robert received his MFA in Acting from Harvard University's A.R.T./M.X.A.T. Institute, and is on faculty at Bunker Hill Community College. He will next appear in *Assassins* at Lyric Stage in Boston. @rstlaurence



Serving great pizza,
pasta, subs & salads
for 50 years!

Also serving our
own HOMEMADE
ICE CREAM

1860 Route 16 • Center Ossipee

603-539-2234

WHO'S WHO IN THE COMPANY • ON THE STAGE

ANDREW SELLON (*Arsenic and Old Lace*) is delighted to be making his Barnstormers debut! He is best known on TV as Mr. Penn/The Ventriloquist/Scarface on *Gotham*. Other Film/TV: *Begin Again, The Smurfs, The Blacklist, Divorce, The Good Fight, Halston*. Favorite stage roles in NY and regionally: Polonius in *Hamlet*, The Fool in *King Lear*, Vanya in *Vanya & Sonia...*, Bazzard in *The Mystery of Edwin Drood*, Charlie in *The Foreigner*, Clown in *The 39 Steps*, and all 35 roles in *I Am My Own Wife*. Audiobooks include: *Turncoat, The Kevin Show, Rattle Man, Nobody's Fool*. Andrew is on the graduate creative writing faculty at Western Colorado University and University College/DU, teaching performance and playwriting. Andrewsellon.com Instagram/ Twitter: @AndrewSellon

DOUG SHAPIRO (*Fully Committed*) is returning for his 23rd season of pancakes at Rosie's Restaurant and some acting with The Barnstormers on the side. In this past year, he's voiced characters for the upcoming film *Lost on a Mountain in Maine*, garnered praise for voicing a mockingbird in the audio adaptation of *Presence, The Play*, role-played with hundreds of executives and medical students in service to their communication skills, and performed to cheering Broadway houses with a bagel on his head. Francis Cleveland, You're Welcome. Come visit at dougshapiro.com and thank you for supporting live theatre!

DAVID SITLER (*Arsenic and Old Lace*) is thrilled to be making his debut here at

The Barnstormers. He has been on Broadway with Rosemary Harris in *An Inspector Calls* and on tour with Stacy Keach in *Frost/Nixon*. As well as working with Irish Rep and many other NYC Theatres and Regionally from coast to coast in over 160 productions. Film credits include the award winning films *Ghetto Dawg, We Wanted Children, Girl Boxer*. TV credits include *Let the Right One In, Little American* and *Chang Can Dunk* to name a few. You can see him in *Red Dead Redemption 2* and the Charlie Puth music video *Left and Right* that has over 331 million views. Thanks to Clayton, this great cast and crew, BWA and wife actor Carolyn Popp. More info at www.davidsitler.com. Proud member AEA.

DUSTIN TEUBER (*Arsenic and Old Lace*) is thrilled to be working with The Barnstormers for the very first time. Dustin's previous credits include *Death Tap/Dave Lester* in "*Black Super Hero Magic Mama*" by Inda Craig-Galvan (Company One/American Repertory Theatre), Count Dracula in Kate Hamill's *Dracula: A Feminist Revenge Fantasy* (Umbrella Stage Company), and has just wrapped up a production of Lynn Nottage's *By The Way, Meet Vera Stark* (Quannapowitt Players). Dustin just received a degree in Psychology, is a trained singer, and is always looking for the next exciting opportunity. Thanks for coming!

MICHAEL URSUA (*Musical Director/Keys, Nunsense*,) Direct from Florida, Michael returns to the Barnstormers Theatre after portraying "the



Serving Lunch, Dinner and Cocktails

Please be seated by 5:30 for 7:30 curtain

"Service with a smile since 1994"

Open Friday - Tuesday 11am to 9 pm. Closed Wednesday and Thursday
603-539-2805 • 2055 Route 16 • West Ossipee, NH

WHO'S WHO IN THE COMPANY • ON THE STAGE

Baker" in their 2022 production of *Into the Woods*. Musical Direction: numerous national tours and regional productions including *Sweeney Todd*, *Hello, Dolly!* (starring Sally Struthers), *Mame* (starring Leslie Uggams), *La Cage* (starring Lee Roy Reams), *They're Playing Our Song* (starring Andrea McArdle), *Memphis*, *Singin' in the Rain*, *42nd Street*, *Nunsense*, *Les Miz* and others. He is the Artistic Director of the Lauderhill Performing Arts Center's Broadway TSeries. It's great to be back at The Barnstormers!

JENNIFER DORR WHITE (*The Stranger*) is delighted to be working at The Barnstormers for the first time. She has recently performed in *Bee Trapped inside the Window* (HartBeat Ensemble), *Jesus in Manhattan* (Ensemble Studio Theatre), *Three Girls...* (Cherry Lane), and *Loyalty* (Hudson Guild). Her TV appearances include *NOS4A2*, *Blindspot*, and *Law & Order: SVU*.

DAN WINERMAN (Director, *The Stranger*) is an actor and theater and film director based in New York City. He has directed and developed new plays at Primary Stages, Ensemble Studio Theatre, Geva Theatre Center, New Dramatists, Lark Theatre, Flea Theater, Atlantic Theater Company, HERE Arts Center, Bos-

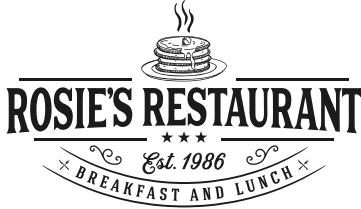
ton Playwrights Theatre, Midtown Int'l Theatre Festival, New York Int'l Fringe Festival, Young Playwrights Festival, Samuel French Short Play Festival, Summer Shorts Festival @ 59E59 Theater, NYU's Dept of Dramatic Writing, and NYU's Dept of Musical Theatre Writing. For Berkshire Playwrights Lab, Dan has directed staged readings of new plays by Anna Ziegler (*Variations on a Theme*), Sam Marks (*The Old Masters*), Jonathan Caren (*The Recommendation*) and John Cariani (*Love/Sick*). Gretna Theatre: Agatha Christie's *A Murder is Announced* and *Murder on the Nile*. Recently he directed two short plays by Cary Gitter at The Tank and is adapting them to film. Finalist: Drama League Fellowship and National Directors Fellowship. Guest Director: Pace University (*Middletown*), American Academy of Dramatic Arts (Mac Rogers' *Blast Radius*), Fordham University, Lee Strasberg Theatre Institute, and Stella Adler Studio of Acting. Dan has taught acting at AMDA, New York Film Academy, New York Conservatory for Dramatic Arts, Rider University, and Atlantic Theater Company. He teaches acting and directing in the Department of Film and Television, Tisch School of the Arts, NYU. BFA: NYU, MFA: Boston University.

E.M. Heath, Inc.



E.M. Heath Supermarket - Center Harbor - 603-253-4312
E.M. Heath Hardware - Center Harbor - 603-253-4381
Jo Jo's Country Store - Moultonboro - 603-253-4843
Golden Pond Country Store - Holderness - 603-968-3434
Heath's Ace Hardware - Laconia - 603-524-1601

VOTED BEST DINER IN NH



603-323-8611 • rosiesnh.com



UNIQUE PERSONAL
CUSTOM DESIGNS



by Emily & Greg

PLUS.. DIAMONDS, PRECIOUS GEMS,
ANTIQUE & ESTATE JEWELRY



2448 Main St., North Conway • 356-5819

Celebrating Our 53rd Year!



Chocorua Creative Arts Center ArtWorks Gallery

Art
Works
Gallery &
Fine Crafts



Gallery - Classes - Events

132 Route 16, Chocorua, NH

ChocoruaArtworks.com • 603-323-8041

June-Dec., open 10-5 pm everyday except Tues.
& First Fridays, 10-7 pm, reception from 5-7 pm.

On the cover: J.P. Goodwin has a love of architecture and landscape design by homeowner and mother nature. She has degrees in fine art and residential design and collections across the U.S. and Great Britain, Italy, Cypress, and Cuba. She also works with fiber, graphite, oil, and murals, as well as oil restoration.

She is a sought-after instructor in graphite and watercolor and may be found around the Mount Washington Valley of New Hampshire en plein air. She is represented in galleries in that area, as well as Marblehead, Massachusetts.

603-367-1046

**Silver Lake, New Hampshire
house-portraits.com**

WHO'S WHO IN THE COMPANY • BEHIND THE SCENES

DEIRDRE BENSON (Production Stage Manager: *Nunsense*, *The Stranger*, *Baskerville*) is delighted to return to The Barnstormers for a second season. Deirdre is a Boston-based stage and production manager. Regional: The Huntington Theater Company, Blue Man Group (Boston), American Repertory Theater, SpeakEasy Stage, Greater Boston Stage Company, Boston Circus Guild. Touring: *Pretty Woman*, *the Musical*.

LILY BITNER (Properties Manager) is excited to be making her Barnstormers theatre debut. She is from Austin, TX and is attending Boston University for her BFA in scenic design. Her latest credits include *Dontrell*, *Who Kissed the Sea* (assistant scenic designer/props coordinator), *El Nogalar* (props coordinator) and *Once* (props coordinator).

RACHEL ROSE BURKE (She/Her) (Scenic Designer, *Nunsense*): Rachel is very excited to return to The Barnstormers for her sixth season. She has worked with The Barnstormers Theatre for several years as an intern, general technician, technical director, scenic charge and scenic designer. Her recent Barnstormers scenic design credits include *Silent Sky*, *Black Coffee*, and *The Legend of Georgia McBride*. Other recent design credits include *Pippin* (Firehouse Center for the Arts), *Boulevard of Bold Dreams* (Greater Boston Stage Company), and *Mr. Burns: A Post Electric Play* (Dean College). She would like to thank the members of the cre-

ative team, as well as her friends, family, and partner for their everlasting support throughout life thus far. She would also like to thank JRR Tolkien for creating the inspirational story that inevitably led to her passion for scenic design. Website: rachelrosescenicdesign.com.

CHELSEA CARTLEDGE-ROSE (Costume Shop Manager) is happily joining us from Norfolk Virginia where she has spent the last 3 years as the Wardrobe Supervisor for the Virginia Stage Company, located in the iconic Wells Theatre. Wardrobe credits include: *The Legend of Georgia McBride* (2020), *The Thanksgiving Play* (2022), *Dream Girls* (2022), *Every Brilliant Thing* (2022), *Henry V* (2023), *A Merry Little Christmas Carol* (2019, 2022, 2023) Costume design credits include: *The Rocky Horror Picture Show* for the Naro Expanded Cinema (2022- current), *Bell, Book and Candle* at the Little Theatre of Norfolk (2022) Chelsie is hoping to expand her eye for details, design skills and experience while at the Barnstormers this summer. She would like to thank Her wife Kim and mom Brenda for all of their unwavering support in this crazy and beautiful line of work.

KEVIN DUNN (Lighting Designer) is thrilled to be back at The Barnstormers for their fifth season! Past design credits include *Shakespeare in Love* (BU School of Theatre), *Wizard of Oz* (Wheelock Family Theatre), *Queens Girl in the World* (Central Square Theatre), *Into the Woods* (The Barnstormers Theatre), *Mansfield*



SERVICE ♦ STORAGE ♦ DETAILING 

1805 Route 16, Center Ossipee, NH ♦ (603) 651-1324

BARNSTORMERS SPONSOR, *ARSENIC AND OLD LACE*

NO DRAMA / NO THEATRICALS

WE LEAVE THAT UP TO THE ACTORS



WIDE SELECTION GREAT PERKS



**10-Years Free
State Inspections**



**3-Day
Money-Back
Guarantee**

TO LEARN MORE, VISIT US AT
GRAPPONE.COM/WHY-GRAPPONE

Established 1924
grappone
AUTOMOTIVE GROUP

Remick
COUNTRY DOCTOR
MUSEUM & FARM



**FROM OUR BARN TO YOURS –
Looking forward to another summer
of great performances in Tamworth!**

VISIT US NEXT DOOR TO THE BARNSTORMERS THEATRE
58 Cleveland Hill Rd., Tamworth Village, NH
www.remickmuseum.org  

CELEBRATING OUR 71ST YEAR

TAMWORTH



HISTORY CENTER

Wishing our next-door neighbor a great 93rd season!

Exhibits and Events All Summer - Join Us!
tamworthhistorycenter.org • 603-323-2911

ValuLand
FOOD STORES
Where the Locals Shop!

For your convenience, we accept...    We Have... 

280 Route 16B, (Indian Mound Shopping Plaza)
Center Ossipee, NH 03814
Phone (603) 539-4416

Full Line of Groceries, Fresh Meats,
Produce, Bakery & Deli



DIGITAL MARKETING & MEDIA

 **thirst**
PRODUCTIONS

TECHNOLOGY SPECIALIST

**WEB DEVELOPMENT,
MAINTENANCE,
HOSTING,
OPTIMIZATION,
TRAINING, & SUPPORT**

 **RICH COLLINS**
CHOCORUA, NH
603.799.2198
THIRSTPRODUCTIONS.COM

**HERE FOR ALL
YOUR REAL ESTATE
NEEDS**




HOMES by WYATT

Wyatt Berrier
(603) 651-5096
wyatt.b@kw.com



homesbywyatt.com

WHO'S WHO IN THE COMPANY • BEHIND THE SCENES

Park (BU Opera Institute), and *A Small Handful* (PTP/NYC). They have been the recipient of the Don Childs Award for Excellence from the Stagecraft Institute of Las Vegas and an Honorable mention for the KCACTF Barbizon Award for Excellence in Lighting Design at the Kennedy Center in Washington DC. They received a Bachelor of Fine Arts in theatrical design from Salem State University, and their Masters of Fine Arts in lighting design at Boston University.

NATALIE GRAY (Wardrobe Supervisor) is based in Arkansas, and is a recent graduate of Henderson State University's Theatre and Dance program. It was in college that Natalie fell in love with theatre, onstage and off! Natalie is an actor at heart, but she loves to transfer her knowledge to the world of costumes. Recent costume design credits include *Our Town* (assistant designer) and *Lovers: Winners* (assistant designer). Natalie would like to thank her partner, Camden, her sisters, Sam and Missey, and her retired college professors, Dr. Claudia Beach and Douglas Gilpin. Enjoy the show!

JOSH HEATH (He/Him) (Master Carpenter) is returning for his second season with The Barnstormers coming from the South Shore of Massachusetts. He graduated from Merrimack College this spring and is looking forward to a career in technical theater. Although he is working as the Master Carpenter for this season, he has experience in scenic as well as lighting and is always eager to help any way he can.

PATTY HIBBERT (Costume Designer, *Nunsense, Arsenic and Old Lace*) made her Debut at The Barnstormers last year with her Costume Designs for *Into the Woods, The Legend of Georgia McBride* and *Lucky Stiff*. This year she is very happy to be back to costume *Nunsense* and *Arsenic and Old Lace*. In the past year, she has costumed: *Les Liasons Dangereuses, The Secret Garden, A Christmas Carol, The Mousetrap, Nunsense, Cabaret, Matilda the Musical, Barefoot in the Park, and Clue* for the M&D Playhouse. With Arts in Motion, she designed *Young Frankenstein* and *Little Women*. For Fryeburg Academy she costumed *ANASTASIA*. In her rental business, she provided costumes for *The King and I, The Marriage of Figaro, Something Rotten, Grease, Mary Poppins*, and more. Upcoming she will do *Murder on the Orient Express, and Camelot* and there will be so many more. Patty came to the area in 1992 to do Summer stock and finally moved here 15 years ago, after falling in love with those White Mountains. Her career in Designing for Opera took her all over the U.S. and Canada, designing and constructing over 60 Operas. Welcome back to another summer of Theater at The Barnstormers!

GWYNETH HIBBERT (she/her) (General Technician) This will mark my second season at The Barnstormers. Having worked in the film industry with several companies; Minnaar Pictures and Smooth Feather Youth, a non-profit that empowers youth through filmmaking, I



CONCERTS BY THE RIVER 2023



- July 2 Dr. Sax's Bop Shop - Jazz
- July 9 The Sandwich Rangers - Folk
- July 16 Cormac McCarthy - Singer-Songwriter
- July 23 The Starlight Honeys - Folk
- July 30 Nourse & Vachon: Classical Selections
- Aug. 6 The Sweetbloods - FM Acoustic Rock
- Aug. 13 Chimera - Rock
- Aug. 20 Mango Groove - Steel Drums

**Ice Cream & Shady Lawn
Kids and Dogs Welcome!
Suggested Donation \$2-5**



**Sundays 3-5 pm
Behind The Other Bakery
Tamworth Village**

WHO'S WHO IN THE COMPANY • BEHIND THE SCENES

am thrilled to be working with The Barnstormers and working with the live theater community!

SARAH LLOYD (Props/Paints Apprentice) is a scene design major at Boston University, and has enjoyed learning how to prop plays, musicals, and operas over the last three years. She looks forward to continuing her design work and pursuing a career in the theatre arts, and would like to thank her friends and family for their support.

SARAH MACINTYRE (she/her) (Assistant Stage Manager, *The Stranger*) is excited to join The Barnstormers Theatre on their production of *The Stranger*. Stage management credits include *Young Nerds of Color* (dir. Dawn M. Simmons, Underground Railway Theatre at Central Square Theater), *Passing Strange* (dir. Arthur Gomez, Moonbox Productions), *The Rocky Horror Show* (dir. David Lucey, Moonbox Productions), *A Midsummer Night's Dream* (dir. Adam Meggido, LAMDA). She's the Production and Operations Manager at the JMAC Worcester. Graduate of the London Academy of Music and Dramatic Art. Proud auntie to L & S - thanks to family and friends for their support. Proud member of Actors' Equity.

EMILY NICHOLS (Scenic Designer, *Arsenic and Old Lace*) is excited to be back in Tamworth for her 14th season. Her previous Barnstormers Theatre designs include *Lucky Stiff*, *Popcorn Falls*, *Spider's Web*, *Laughter on the 23rd Floor*,

and *Towards Zero*. Emily is a Connecticut based scenic designer. Her recent design credits include *Godspell* (University of New Haven), *Secondo* (Seven Angels Theatre), *Pippin* (Hartt School), *The Hatmaker's Wife* (University of New Haven), *Pride & Prejudice* (Hartt School), *Cinderella* (Seven Angels Theatre), and *Cyrano de Burgershack* (Canterbury School). Her designs have also been seen at Babson College, Playhouse on Park, and Actors' Shakespeare Project. Please visit www.emilyjnichols.com for more information.

KIMBERLY S. O'LOUGHLIN (Sound Designer) is an NYC metro area-based Sound Designer and Composer and proud queer trans woman! She has worked Off-Broadway, Regionally, and Educationally at many theaters. Currently she teaches and mentors students at Montclair State University in Sound Design. Barnstormers Credits Include: *Into the Woods*, *Lucky Stiff*, and *Popcorn Falls*.

JOE PARIS (Technical Director) is happy to serve as the technical director for the 2023 Season at The Barnstormers! A recent graduate of the State University of New York at Fredonia '21, Joe has worked in the scene shop for summer stock theater at Nebraska Shakespeare, and The Weston Playhouse Theater Company. During the other 10 months of the year, Joe is the 7-12 Vocal Music Teacher at Byron-Bergen CSD outside of Rochester, NY where he enjoys sharing his passion for music and theater with his students.



**24 HOUR
FITNESS CENTER
AND MUCH, MUCH MORE...**

Rt 16, West Ossipee, NH

603-520-1615

RockinWellnessNH@gmail.com

RockinWellnessNH.com



WOLFEBORO: (603) 569-3128 | ALTON: (603) 875-3128

CENTER HARBOR: (603) 253-9360 | MEREDITH: (603) 677-7068

www.MaxfieldRealEstate.com

The LAKER

Your Guide to What's Happening in New Hampshire's Lakes Region

Celebrating 40 years in the Lakes Region

Thank You Barnstormers!

thelaker.com

Old North Construction

Carpentry | Remodeling

Eric Pont

1932 Chinook Trail
Tamworth NH 03886

910-658-7785

30 Years Experience
Fully Insured

Always on the air
Always online
Always on demand
Always on the beat
Always on your mind
Always on.

nhpr

News from New Hampshire and **npr**

89.1 Concord/Manchester | nhpr.org

WHO'S WHO IN THE COMPANY • BEHIND THE SCENES

RYAN RANDAZZO (Master Electrician) is a Junior at Montclair State University in Montclair, NJ, studying Theater Design Technology and Management. He is a New York Based Lighting Designer and Electrician. He has worked on projects on-campus, most notably, *On The Town* (Assoc. LD), *A Chorus Line* (2nd ALD), and *Black Snow* (ALD). Ryan is designing *Anna in the Tropics* on-campus in the fall. Ryan is 20 years old and is making his professional debut here at The Barnstormers Theater as the Master Electrician for the summer season!

KARISSA ROBERTS (Scenic Charge): Central Square Theatre: (Props Artist), *Angels in America: Millennium Approaches*. Lyric Stage Company of Boston: (Props Artist), *Sister Act, The Great Leap, The Play That Goes Wrong*; (Props Designer), *The Day We Saw Everything, Party Bots*. Merrimack Repertory Theatre: (Props Manager), *Letters from Home*. Watertown Children's Theatre: (Scenic Painter), *Descendants, Something Rotten*. The Barnstormers Theatre: (Scenic Charge), *Lucky Stiff, Silent Sky, Black Coffee, The Legend of Georgia McBride, Into*

the Woods. Karissa graduated from Plymouth State University in 2022 with a BFA in Studio Art and minors in Graphic Design and Art History. artworkbykarissa.weebly.com

DORI ROBINSON (Production Manager) is a theatre maker, experiential educator, and creative cultural leader. She has worked with various educational and nonprofit organizations throughout Chicago, New England, New York, Israel, and Ireland. With her theatre company, [Alight Theater Guild](#), Dori hosts Tree Speech - a podcast exploring our tangled relationship with the natural world. M.A., New York University. Gratitude to Sarah. www.dorirobinson.com

JUSTIN SCHMIDT (Assistant Stage Manager *Nonsense*) is a theater stage manager and film director living in St Louis, MO. In his free time he produces music and practices yoga. He grew up much of his childhood in Tamworth and feels right at home when he has a chance to come north. You will likely find him playing with rocks in the swift river between work.



BOARD OF DIRECTORS

Chair: Lou DeMaio
Secretary: Anne M. Batchelder
Treasurer: Dorothy Veracka
Minda Bradley
Mary Breasted Smyth
Kate Thompson
Frank Vignand
Lynn Kearney
Jean Williams
Lauren Moulis

In recognition of dedicated service to the mission of The Barnstormers, the Board recognizes the following members of The Barnstormers family:

Board Member Emeritus:
Margaret Cleveland, Mildred Beach, George Cleveland, Shirley Ganem, Helen Steele, H. Parker Roberts, Peter Whipple.
Marion Cleveland Cohen, Honorary

Artistic Director Emeritus:
W. Clapham Murray

HELP SUPPORT OUR COMMUNITY



TAMWORTH FOUNDATION

SINCE 1937

Our mission is to preserve and improve the physical properties and the spiritual, intellectual, social and physical well-being of the inhabitants of the Town of Tamworth.

In the last year we have distributed \$447,718 in grants:

- Summer camp
- Ski program
- Elder care
- Mental health
- Performing arts
- Reading program
- Scholarships
- Security
- Thrift store
- Food safety
- Historic records
- Archives
- Building upgrades
- Steeple repair
- Dam repair
- Energy study
- Recycling improvements

Plus, Annual Distributions from Six Permanent Endowments

WE HAVE MUCH MORE TO DO!

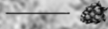
If you would like to support the work that we are doing, please consider making a contribution to our endowment!



photo by Sheldon Pezay

PO Box 128 Tamworth, NH 03886
www.tamworthfoundation.org | grants@tamworthfoundation.org

**PUBLIC
HOUSE**



PAGE HILL



DINNER: WEDNESDAY - FRIDAY 4-9 PM + SUNDAY BRUNCH 10-2 PM

RESERVATIONS REQUIRED

WWW.PUBLICHOUSEONPAGEHILL.COM



STAGE DIRECTORS AND CHOREOGRAPHERS
SOCIETY, a national theatrical labor union.



**ACTORS'
EQUITY**
ASSOCIATION 1913

HUNDELRUT STUDIO

Tuesday - Saturday 9:30 to 5:30

Art Gallery & Delightful Gift Shop

Locally Handmade & Fun NH Gifts,
Artful and Assorted Greeting Cards,
Fanciful Sculptures, Pottery, Paintings,
T-Shirts, Canvas Bags, & More !

584 Tenney Mountain Hwy
Plymouth, NH 03264 • 603-536-4396

33rd Anniversary

NEW HAMPSHIRE

PRO THEATRE

ASSOCIATION

www.nhpta.org

THANK YOU SO MUCH!

The Barnstormers Theatre is extremely grateful for the financial support we receive from our contributors. Every gift matters. We depend upon our caring patrons to sustain us as a performing arts organization.

We try hard to make sure that our valued donors are recognized for their generosity, and we apologize for any oversights. We also thank those whose donations were received after May 31st, 2023.

OUR CONTRIBUTORS

\$5 - \$49

Anonymous (3)
Anderson, Elizabeth
Balionis, Kay Harris
Batchelder, Patrick & Yuko
Bennett, Donna
Black, Roger
Bono, Amy
Bosler, Watson
Brindamour, Rev. Maurice
Brooks, Allen & Joanne
Brooks, Joanne & E. Allen
Brown, Abbie
Bruce, Colleen
Carey, Rick & Sue
Cheese-Probert, Helen
Cohn, Margaret
Collazzo, Leanne
Comer, Cynthia
Coutomas, Marya
Creem, Kimberly
Cunningham, Geoffrey &
Boyden, Rebecca
Dailey, Susan B.
Daly, Cornelius & Amy
Daly, James & Amy
Decker, Chris & Elly
DeMichael, Elise
Despres, Susan
Dixon, Judith
Earle, Carol & William
Falcone, Joslyn
Fenn, Bradbury
Flanagan, Barbara & Edward
Ford, Patricia
Foss, Jeffrey
Fox, Irving & Gloria
Gannon, Cheryl
Goldman, Leo & Jan
Golini, Jennifer & Albert
Griffey, Barbara

Hall, Ross & Bonnie
Hannaford, Corine
Hatfield, Patricia
Hatfield, Patricia & Viger, Jennifer
Heck, Joyce
Hillsgrove, Mary
Hogan, John
Holley, Drexene
Indelicato, Marilyn
Johnson, Margarita
Johnson, Peggy
Johnson, Walter C.
Karsenes, Matthew
Kaye-Kuter, Carrie Ann
Kayser-Brady, Michele
Kellman, Amy
Kessler, Jese
LaBrecque, Laurie
Levy, Robert & Gladys
Lyons, Stephanie
Mariello, Sally & Dick
Marrone, Gail
Mason, Jane
McAffrey, William
Mills, Lorraine
Moody, Sarah
Morris, Geraldine
Murray, Christine
Nelson, Louise
Pennucci, Jean
Pierson, Sandra
Porter, Edward
Posner, Richard & Marion
Pratt, Adam
Rancourt, J. J.
Ridyard, Brian
Scharf, Katherine
Scott, Kathryn
Scudder, Susan
Sepenoski, Susan
Seremet, Thomas
Seward, Margaret & Benjamin

Slader, Frederick & Barbara
Smith, R. Blake
Stirt, Marilyn
Stump, Pamela
Sweeting, Randy
Thalhamer, Dagmar
Thornton, Mark & Joslyn
Troseth, Gail & Wheeler, John
Twomey, Christopher
Van De Graff, W.B. & M.K.
Wilkins, Dr Anne Thomas
& Dr David G
Wing, Suzanne B.
Wolfe, David
Wright, David
Wyckoff, Mary
Yearwood, Ahmed

\$50 - \$99

Albee, Ingrid & Mark
Alexander, Mary
Alkalay, Marcella
Badyna, Barbara
Bainton, Cynthia
Baker, Guy
Barton, Ron & Marie
Berry, Paul & Barbara
Bruce & June Howlett
Butler, Mr & Mrs Leslie
Buttrick, Karrie & Brandon
Campbell, Lindsey Ann
Chanley, Jeanne & John
Cherwek, Roland & Grace
Christian, Tim & Sarah
Christopher, Arthur & Linda
Ciborowski, Dr. Paul
Clarke, Sandy
Cleveland, George
Cronin, Mary & David
Cushion, Diane & David
Dale, Duane

Dalzell, Kathleen
 Doherty, James & Bonnie
 Duffield, Susan & Herbert
 Fibiger, John
 Fike, Richard
 Folliard, Joel
 Forbes, Karen
 Frantz, Bill & Peri
 Gianino, Gary
 Gilbride, MaryLou
 Glick, Michael, MD
 Graf, Brian
 Grover, Robert & Donna
 Habif, Linda
 Hemingway, Carolyn & Kent
 Henry, Nancy
 Holm, Gene
 James, Kathleen
 Kender, Jessica & Page, Samuel
 Kernder, Jessica
 King, Sandra
 Kirby, Emily
 Knight, Arlene
 LeFebvre, Andrea
 Letarte, Heather
 Lion, Keith L.
 Lowery, Paulette
 McEwaqn, Anne
 McVicar, Doug & Selchen, Frumie
 Meers, Jen & Lees, Scott
 Mersfelder, John & Catherine
 Mierins, Virginia
 Moore, Phillips
 Moot, Amy
 Moot-Rosa Charitable Fund
 Moriarty, Pattie & George
 Murphy, Diane & Warren
 Murphy, Victoria
 Navarro, Susanne
 Nichols, Allison & Lawrence
 Nichols, Nancy
 Nichols, Allison
 Parilla, Sue
 Parker, Robyn
 Paryl, Laura
 Payne, Grace
 Perry, Nina & Sheldon
 Petry, W. F.
 Phillips, Frederick
 Place, Dale
 Pratt, Robert & Alix
 Preserve at Chocorua
 Roberts, Joan

Russell, Peter
 Sandereson, Anne
 Sanford-Miller
 Schlenker, Cheryl
 Schwartz, Steven & Paula
 Scoville, Paul & Judy
 Seitz, Jill
 Sheridan, Nancy & Taylor, Louise
 Slocum, Joel & Deborah
 Snyder, Richard & Sue
 Sopyla, Alexander & Eileen
 Spence, Arthur & Siusan
 Steinberg, Robert
 Stewart, Sydney B.
 Stowbridge, Susan, in Memory of
 John McGowan
 Strehle, Glenn & Katherine
 Tamburrini, Donna & Jack
 Tregenza, Alyce
 Treut, Stephen & Lois
 Tucker, Dawn
 Varnum, Thomas, Jr.
 Verspyck, Catherine
 Vitek, Karen
 Watson, Gabrielle & Doucette,
 Richard
 Weston, Patricia
 Whitehead, Mark & Kathleen
 Willis, Harry & Sandra
 Yahn, Joanie & Walter
 Zanchi, John A.

\$100 - \$249

Abbott, Penelope
 Alt, Christopher & Divitto, Barbara
 Aprille, June & O'Bryan, Nelson
 Aschoff, Heather
 Bailey, William & Linda
 Bainton, Barbara & Ernest
 Bainton, Diane
 Bartlett, Grace
 Barton, Ron & Marie
 Batchelder, Sarai & Fisher, Ed
 Beam Lundberg Charitable Fund
 Beecher, Ned & Clyne, Chris
 Bellerose, Brenda Johansen
 Bemis, Eleanor
 Bergeron, Tom & Toni-Gayle
 Bernhardt, William & Margaret
 Bienenfeld, Paula &
 Myers, Emlen
 Bodurtha, Joann & Thomas

Boomer, Nola
 Booth Foundation.
 Bud & Betsy Booth
 Bowen, Robert
 Bratten, John & Amy
 Brown, Marilyn
 Brudevold, Christine
 Buonopane, Paul
 Burghardt, Ann
 Burke, Christopher
 Buttitta, Cynthia
 Buttner, Joe & Pat
 Cantara, Michele
 Capano, Peter & Susan
 Carlson, Jane & Christopher
 Carr, Lawrence & Sandra
 Carter, Linda
 Casey, Thomas
 Castleberry, Wendy
 Chapman, Russell
 Chin, George & Mary
 Christopher, Barbara
 Clark, Jonathan
 Clyne, Chris & Beecher, Ned
 Cody, Ann
 Connolly, Paul
 Connors, William & Diane
 Cooke, Janet
 Corcoran, Frances
 Cormack Construction
 Cowsl, Robert
 Creem, Cynthia & Harvey
 Csendes, Nicholas & Marlene
 Dansreau, Janice & Don
 Davis, Steve
 DiLando, Elizabeth
 Doody, Donna & Steve
 Dwyer, Deborah & Philip
 Dyrenforth, Kathie
 Earle, Bill & Rhonda
 Elliott, James & Elizabeth
 Emery, Martin
 Eno, Jean
 Eskedal, Glen & Jan
 Evans, Lynn
 Fay, Merrill & Beth
 Fernandes Charitable Fund,
 Betty & Tino Fernandes
 Fine, Perry & Susan
 Frasca, Nick & Sasha
 Frasca, Stephen
 Friedman, Barry
 Gallagher, Dennis & Vicky

Geoghegan, Andrew & Pinza,
 Gloria Geoghegan,
 Emily & Tigert, Leanne
 Gosselin, Robert
 Graham, Donald & Ingrid
 Granfield, Nancy
 Gregoire, James
 Gridley, Mark & Debra
 Grossman Family Charitable Trust
 Gullotti, Russ
 Hackl, Ann
 Hall, Lindley & Pamela
 Hamilton, Kathleen &
 Vlahakes, Gus
 Hamman, Charles & Ethel
 Hanauer, Gerald
 Hansen, Carl & Gail
 Harmon, Linda & Robert
 Haynes, Helen & Watts, Charles
 Hellquist, Carl
 Henle, James & Portia
 Hill, David & Pam
 Holmes, Bradford & Katherine
 Horton, Russell & Diana
 Howlett, Mr & Mrs Bruce
 Hundertmark, Blair
 Hundgen, Donald & Sarah
 Hutchings, Betsy
 Hutchinson, Hope
 Iacovelli, Robert & Irene
 Ingersoll, Caroline
 Irwin Automotive Group
 Isabelle, Joseph & Doris
 Joern, Charles
 Johnson, Leslie
 JR Low Family Fund
 Kenison, Paul
 Kilgallen, Francis & Frances
 Kingham, Barry & Charlotte
 Klufts, Carol
 Kramer, Ted & Carol
 Kubecka, Nancy
 Kuharic, Maureen
 Lanou, Greg & Skillin-Lanou, Tracy
 Lariviere, Ryan
 Lash, Robert
 LeClair, Elizabeth & Jeffrey
 Lee, Mark & Joyce
 Lipman Pearl Family Fund
 Little, Lawrence
 Livesey, Ron
 Long, Ed
 Longley, Mark & Peggy

Loughran, Elizabeth
 Lyscars, Alan
 Mabley, Chris & Jan
 Magoun, Peter & Maryann
 Maiorino, Denis
 Marple, Kathryn
 Matesky, David & Helene
 Matlock, Paul & Sarah
 Max, Theresa
 McIlwraith, Andrew & Tish
 McInninch, Douglas
 McKechnie, Sally & Les
 McLain, Judith
 Mesick, Seteve
 Meyers, Robert & Shirley
 Morrison Family Charitable,
 Mr & Mrs Thomas
 Morrison, Martha
 Moulis, Lauren
 Mullings, Cheryl, in Memory of
 Dave Brown
 Murphy, Bob & Jean
 Mutter, John G. & Cynthia
 Myer, Keats
 Newlin, Mr & Mrs William
 Norton, Robert & Sexton, Ruth
 Nylander, Richard & Jane
 O'Brien, Peter & Meg
 O'Toole, Elizabeth
 Parker, Karen
 Penrose, John & Fatima
 Perry, Ned & Wood, Cynthia
 Pi-Sunyer, Penelope
 Pollack, Jean & Henry
 Pruchansky, S.
 Pugh, Rebekah & Alison
 Race, Geoffrey
 Rainville, Joanne
 Raymond, Daniel
 Reid, Ellen & William
 Reis, Steven
 Robbins, Letitia
 Robbins, Michael
 Roberts, Willow & Parker
 Rogers, David & Audrey
 Rogerson, Ned & Liza
 Romanosky, Walter & Diane
 Rozene, Richard & Wendy
 Ryan, Thomas & Patricia
 Sanderson, Anne
 Savage, Derek & M.C., in Memory
 of Marion Cohen
 Schibanoff, Judy & Harry

Schifrin Foundation
 Sias, Kathleen
 Simpson, Wendy
 Smith, Teresa Doyle
 Spaulding, Martha Lee
 Speers, Susan
 Staples, James
 Steele, Helen
 Steinman, Dr & Mrs Theodore
 Stiglin, Laura
 Stiglin, Laura
 Sturdivant, Christine
 Sundquist, Carolyn
 Szapiel, Rhonda & Rosine, Leo
 Szeto, Alexander & Julie
 Tela, David & Phyllis
 Thomas, Laura
 Tomb, Douglas
 Treadwell, Sally
 Trout, Katherine
 Upham, Margaret
 Upper Road Life Coaching
 Vlahakes, Gus &
 Hamilton, Kathleen
 Von Kohorn, Meredith
 Wardlaw, Lisa
 Warren, Lee
 Watkins, John & Mary
 Wavle, James & Elizabeth
 Weiss, Howard & Stolov, Susan
 Wells, Frank T & Vinette
 Whitmore, Ian
 Wilcox, Wayne
 Wilkes, Margaret & Jeffrey
 Wilson, Julie Boatwright
 & Thomas
 Wilson, Michael J.
 Wilson, Thomas & Grace
 Winstead, Page
 Wolcott, Edward O.
 Worcester, Barbara
 Yoder, Evelyn & David
 Zock, Robert

\$250 - \$499

Actors' Equity Foundation
 Almendinger, Richard
 Bates, Vickie
 Battersby, Robert, in Memory of
 Caroline Battersby
 Bennett, Christopher & Videen
 Berman, George &
 Roman, Regina

Berry, Paul & Barb
 Brown, Alan
 Buckley, Deborah
 Carengelo, Robert
 Colbath, John
 Corson George C. Jr
 Crocker, Susan & Gifford, Lindley
 Cunningham, Howard &
 Constance
 Duprey, Stephen
 Finley, John & McGee, Stanley
 Gordon, Ellen
 Hoffstein, Judy & Gordon
 Jakobsen, Tore & Dee
 Jenkins, Jan
 John, Doug & Wendy
 Kennedy, Judy & Dan
 Kennedy, Mary & James
 Lukach, Sharry & Art
 Mackensen, Warren & Patricia
 Mitchell, Robert
 Moulis, Thomas & Denise
 Obrecht, Charles & Margaret
 Oedel, Herbert & Virginia
 Osorio, Danielle & John
 Pike, Stephen & Maureen
 Price, Linda
 Przybyla, Joseoh & Therese
 Ritchie, Kenneth
 Sanders, Vicki
 Sanford, Sharon & Robert
 Scarcella, Wendy
 Schatz, Cindy
 Senator, Susan & Batchelder, Ned
 Shaw, Robert & Anne
 Simkin, Peter H.
 Smith, Thomas
 Sonn, Edward & Marybeth
 Stephens, Robert
 Surmeli, Natalie Frasca
 Tapper, Elizabeth
 Warren, Karen & John
 Wright, Thomas & Barbara

\$500 - \$2499

Anonymous (2)
 Battersby, Lois, in Memory of
 Caroline Battersby
 Beecher, Jesse
 Berman, Martin & Jasienowski,
 MaryAnn

Craig, James & Nancy
 Cronan, R. Todd
 DeMaio, Louis & Linda
 Donoghue, Lawrence
 Fernandez, Richard
 Friends Central School,
 Beth Johnson
 Gerrish, Allan & Gail
 Golden, David & Jean
 Green, Ken & Sandy
 Hardenbergh, John
 Hilltop Foundation, Leslie &
 Austin Furst
 Immen, David & Patricia
 Kearney, Ed & Lynn
 Knirk, Jerry & Spence, Camilla
 Koerner, Robert & Patricia
 Larson, Rose & Bill
 Lee, Mr & Mrs David
 Lindblade, Carl & Dorothy
 Litterst, Bob & Dawne
 Little, David
 Murray, Catherine & Peter
 Murray, Peter C.
 NH Charitable Foundation
 NH Charitable Trust
 Noyes, Joanna T.
 Nye Family Fund, Joseph
 & Molly Nye
 Orr Family Foundation, Anne Orr
 Pastrick, R.Scott & Courtney
 Perry, Tom
 Phillips, Fran & Beverly
 Pilkovsky, Mike & Payne, Karen
 Robertson, Thomas, in Memory
 of Muzzy Cleveland
 Rowe, Dan & Liz
 Schneider, Mark
 Severino, Paui & Kathy
 Snaith, George
 Tarica, Pamela & Laurence
 Theodore, James
 Tomb, Donald
 Townsend, Alexandra
 Trocki, Phil
 Undapassawona Fund
 Veracka, Gene & Dorothy
 Vignand, Frank
 Weatherbee, Matthew & Susan
 Weld, Stephen
 Williams, Constance
 Williams, Jean & Grant, Nicholas

Over \$2500

Anonymous (2)
 Anderson, Elaine
 Batchelder, Bill & Anne
 Bradley, Minda & Steve
 Hamel, Karol & Dana
 Little, Royal Family Foundation
 Marriott Foundation, Nancy
 Peery Marriott
 McGowan, Hope
 Mosson, Sheila
 NH Charitable Fund -Francis and
 Alice Cleveland Endowment
 NH Council on the Arts
 Penates Foundation, Montrone,
 Paul & Sandra
 Pope Family Giving Fund
 Smyth Family Foundation
 Thompson, Kate
 Woodhouse, Marilyn

**MEMORIAL DONATIONS WERE
 RECEIVED AS FOLLOWS:**

In Memory of Cope Murray:

Batchelder, Bill & Anne
 Buckley, Deborah
 Hutchings, Betsy
 Mullings, Cheryl
 Murray, Peter C.
 Roberts, Willow & Parker
 Vignand, Frank

In Memory of Karen Johanssen:

Bellerose, Brenda Johansen
 Dailey, Susan B.
 Doody, Donna & Steve
 Friends Central School, Beth
 Johnson
 Hendrie, Gardner
 Hoffstein, Judy & Gordon
 Lowery, Paulette
 Morris, Geraldine
 Noyes, Joanna T.
 Severino, Paui & Kathy
 Sheridan, Nancy & Taylor, Louise
 Szeto, Alexander & Julie



Local connection for Advertising in the Mt. Washington Valley Region since 2012.

- Barnstormers Program Book
- Route 16 Billboards
- The Mt. Washington Valley Vibe
- Golf Tee Signs/Scorecards
- Campground publications & maps
- Rack Cards and Home Mailings

cjhowelladvertising.com
603-651-7068

arts
council of
tamworth

Please support our mission of
*Enriching Lives
Through The Arts*

with a donation towards
our endowment Challenge Grant

ArtsTamworth.org/Challenge-Grant

BARNSTORMERS

★ OPENING NIGHT COCKTAILS ★
& BITES AT
TAMWORTH LYCEUM



★ **\$35-\$55** ★

5:30PM

6/29 - NUNSENSE

7/13 - ARSENIC AND OLD LACE

7/27 - THE STRANGER

8/10 - FULLY COMMITTED ★

8/24 - BASKERVILLE: A SHERLOCK HOLMES MYSTERY

The Farmstand

Farm House, B & B and Event Space
Sunday Concerts Through September
Chocorua Village

thefarmstand.net ▪ 603-323-6169



Professional Theatre
Shakespeare Camps
Youth Mentoring
Community Programs

For performance information, please visit
advice-to-the-players.org
(603) 284-7115

More Fun at The Barnstormers

Enjoy our concession area outside the theatre at intermission

Wine and Beer • Tamworth Distilling White Mountain Lemonade

Alcohol Free Options: Lemonade and Water

Chocolate Chip Cookies

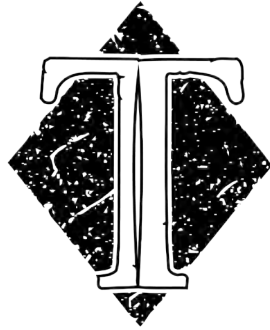


LOCAL HAND CRAFTED
AWARD WINNING WINES

*Minimally processed for
maximum flavor...
made the old country way!*

whippletreewinery.com

372 Turkey Street
Tamworth, NH
603.323.7119



TUCKERMAN BREWING

66 Hobbs Street
Conway, New Hampshire
603-447-5400
tuckermanbrewing.com

Whippletree Winery and Tuckerman Brewing Co.
have graciously sponsored concessions for the 2023 season.
Please support these great local businesses!

Special thanks to
Christy Pacheco of
CJ Howell Advertising
for helping to make the
Summer Program book
happen! We have enjoyed
working with her and look
forward to next year!



Lodge Community Development Campaign
Learn more: office@barnstormertheatre.org

ADVERTISER INDEX

Many thanks to all of our 2023 advertisers. Please give them your support.

Advice to the Players	42
Arts Council of Tamworth	42
Artworks Gallery	27
Bank of New Hampshire	13
Chocorua Camping Village	17
CJ Howell Advertising	42
Cold River Marine	28
Concerts by the River 2023	31
Conway Scenic Railroad	14
Cooper Cargill Chant	22
Cormack Construction Management	12
D.W. Electrical Contractors, Inc.	Inside Back Cover
E. M. Heath	26
Exit Realty	9
Farm to Table Market	12
Grappone Automotive Group	29
Hobbs Brewing	9
Homes by Wyatt - Wyatt Berrier	30
Hundelrut Studio	37
Jake's Seafood	25
Leone, McDonnell & Roberts	18
Maxfield Real Estate	33
Meredith Village Savings Bank	Back Cover
Mount Washington Auto Road	15
NHPR	34
North Country Fair Jewelers	27
Old North Construction	33
Pizza Barn	24
Profile Subaru	23
Public House on Page Hill	37
Remick Country Doctor Museum & Farm	30
Rockin' Wellness	32
Rosie's Restaurant	27
Tamworth Distilling	Inside Front Cover
Tamworth Farmers' Market	27
Tamworth Foundation	36
Tamworth History Center	30
The Carl E. and Dorothy M. Lindblade Family Fund	21
The Farmstand	42
The Groleau Financial Group at Thrivent	9
The Laker	33
The Majestic Theatre at Mountain Top Music Center	15
The Preserve	10
The Woodshed	16
Thirst Productions	30
Tuckerman Brewing	43
ValueLand Food Stores	30
Whippletree Winery	43
White Gates Farm	19
Yankee Smokehouse and Wild Hog Pizzeria	12



Residential • Commercial • Industrial



*Serving the Electrical needs of the
Mt. Washington Valley*

DWECI.COM • 603-733-5333

**Caring has always been at the heart
of everything we do. By building and
nurturing relationships,
we can cultivate a community
where we all thrive.**



Member
FDIC



800.922.6872 mvsb.com